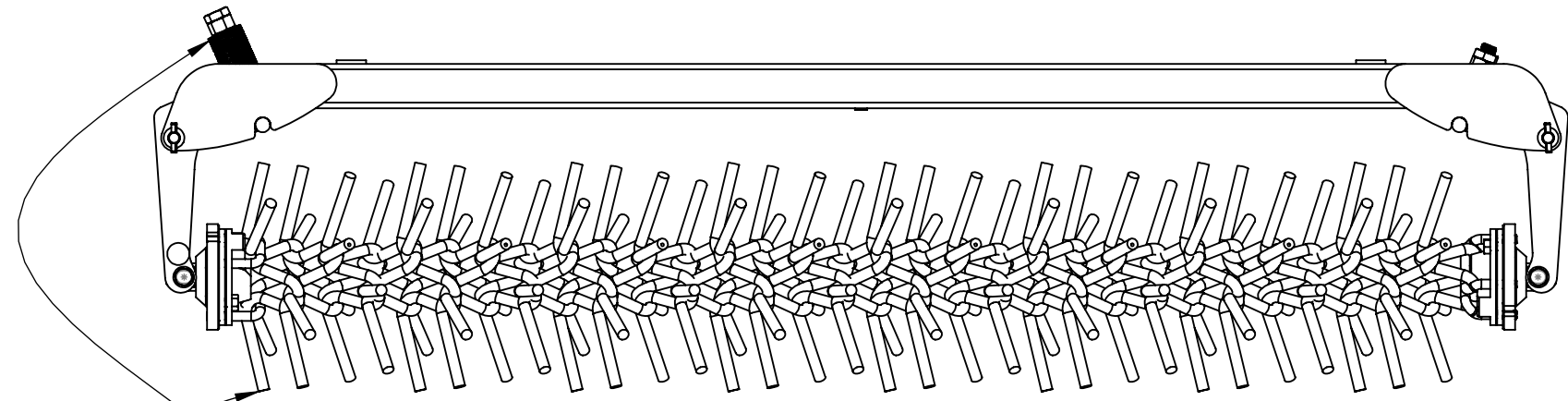
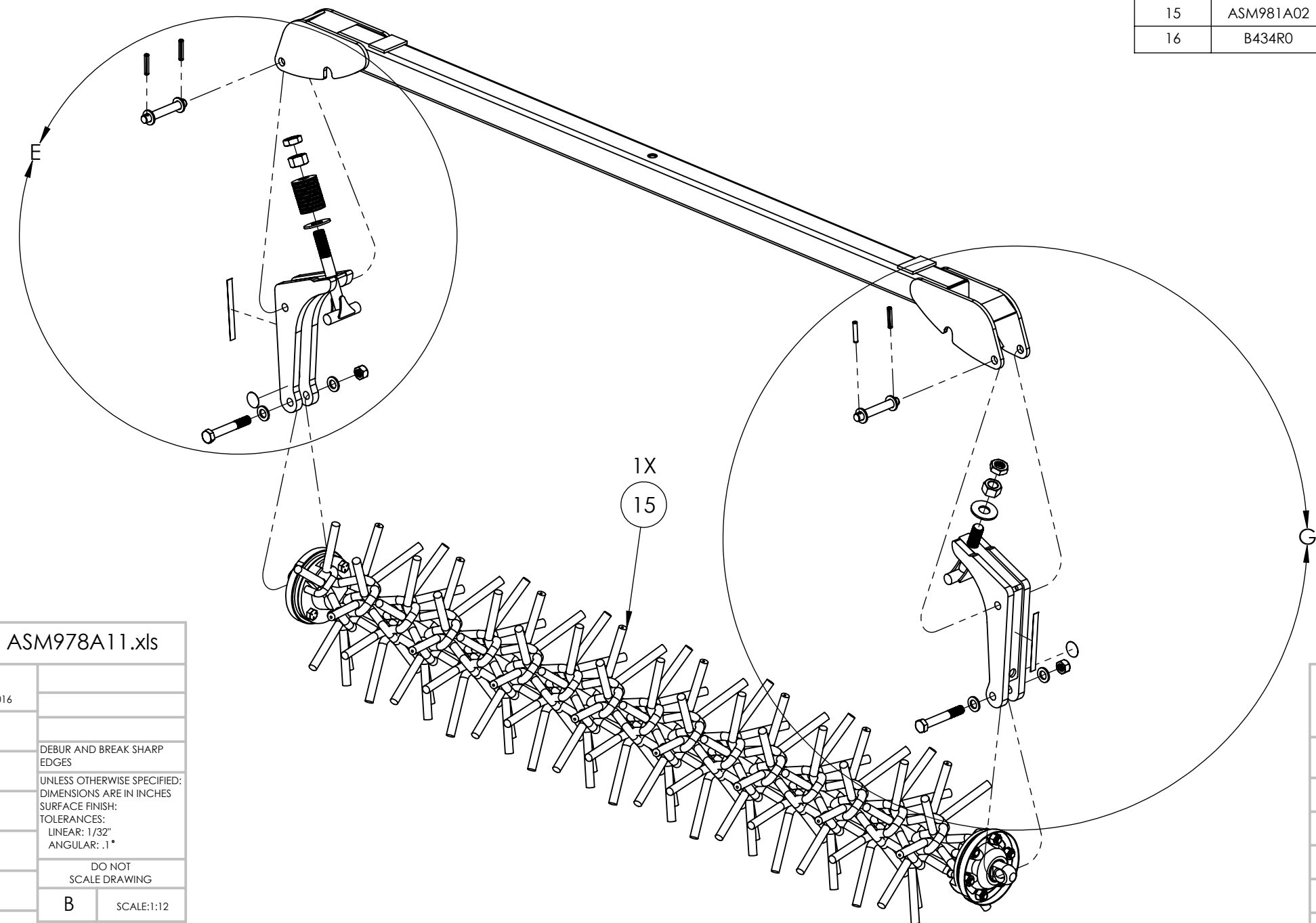


ITEM NO.	PartNo	QTY.	Description	Material
1	2011037C9	1	Harw module backbone, 5ft section	
2	2011038C3	2	HARROW TENSION ARM	
3	2011201P0	8	FLAT WASHER, .75, SAE, MCM# 98023A036	MCM# 98023A036
4	2011204P0	2	FLAT WASHER, 1.0, USS, MCM# 98026A038	MCM# 98026A038
5	2011213P2	4	3/8" X 2 Slotted spring pin ZP, MCM# 90692A775	MCM# 90692A775
6	2011219P1	2	3/4"-10 x 5" Yellow Zinc Plated Grade 8 Alloy Steel Hex Head Cap Screw, MCM# 91257A855	
7	2011224P0	2	1-8 Hex Nut, Gr5, Zinc, McMaster: 95462A548	1-8 Hex Nut, Gr5, Zinc
8	2011321P0	2	3/4"-10 Cadmium-Plated Grade C Steel Oval Locknut with Conical Top, MCM# 92501A036	MCM# 92501A036
9	2012127P0	17	1" x 2.375" x .118" 3694lb flat Belleville Washer, KEYBLVL# K2375-K-118	KEYBLVL# K2375-K-118
10	2012128P0	2	1"-8 Zinc-Plated Grade 5 Steel Thin Hex Nut, MCM# 94846A550	MCM# 94846A550
11	2012129C2	1	Harw tension bolt, short	
12	2012130C2	1	Harw tension bolt, long	
13	A321R0	2	(Grease Gun) 50 graphic	PLASTIC
14	A733R0	2	3/4" x 5-1/4" two hole pin	BAR-.75 DIA C1018
15	ASM981A02	1	HARROW TOOLING, STANDARD	
16	B434R0	2	Sticker, red reflective strip 5/8X6	PLASTIC



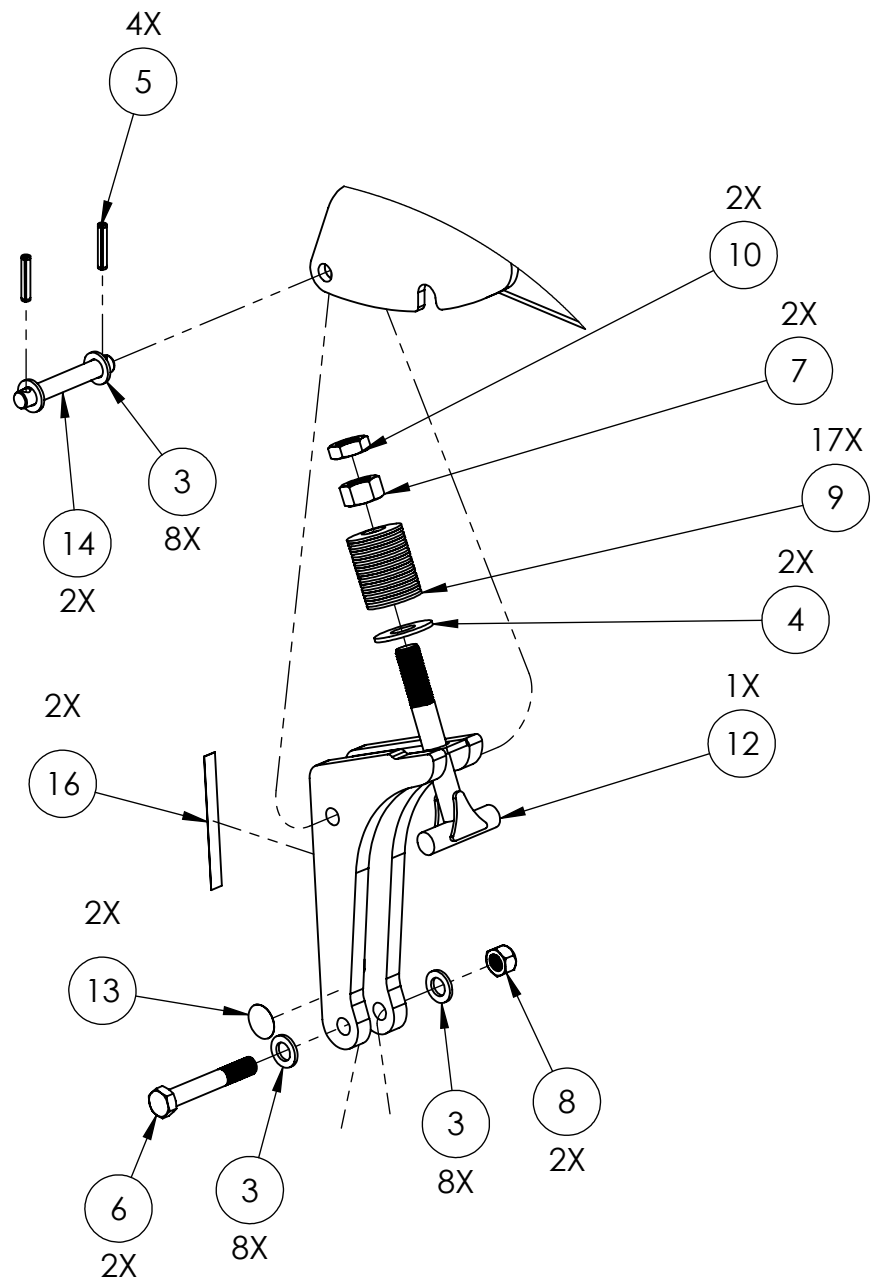
Tines tilted away from spring-loaded end



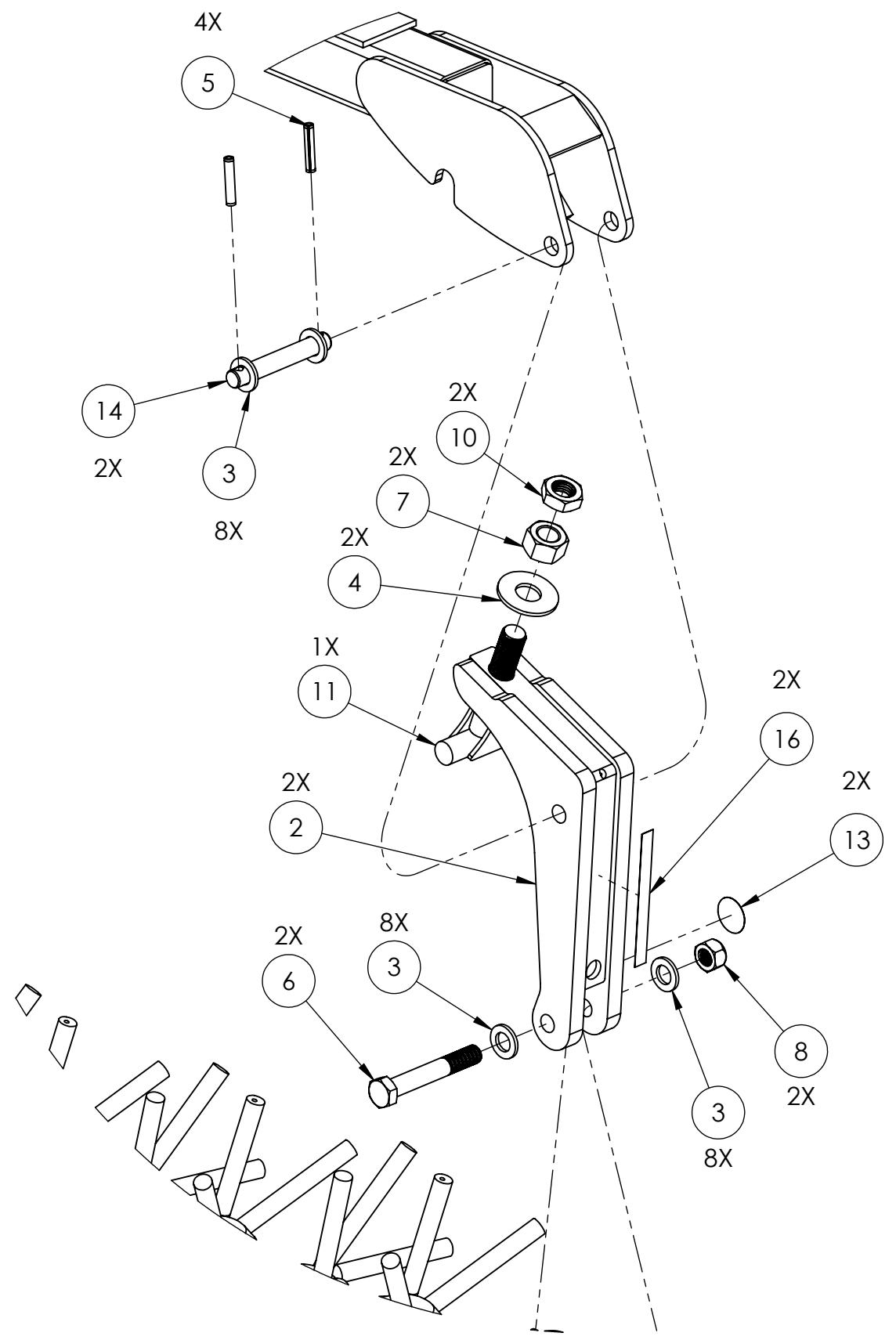
Assembly BOM Link: [ASM978A11.xls](#)  
 ( contains prints to constituent part prints )

Drawing Name: ASM978A11	REVISION 0	DATE 5/10/2016
A:	DEBUR AND BREAK SHARP EDGES	
B:	UNLESS OTHERWISE SPECIFIED: DIMENSIONS ARE IN INCHES SURFACE FINISH: TOLERANCES: LINEAR: 1/32" ANGULAR: .1°	
C:	DO NOT SCALE DRAWING	
D:	B	SCALE:1:12
E:	SHEET 1 OF 3	
NAME Daniel R. M.	SIGNATURE	

PART NO. <b>ASM978A11</b>	DESCRIPTION: Harrow Module, 6.5ft
PROCESSES	WEIGHT: 338.86lbs
Assemble	<b>Soil Regeneration Unlimited</b>
Grease	
<small>PROPRIETARY AND CONFIDENTIAL        THE INFORMATION CONTAINED IN THIS DRAWING IS THE SOLE PROPERTY OF SOIL REGENERATION UNLIMITED. ANY REPRODUCTION IN PART OR AS A WHOLE WITHOUT THE WRITTEN PERMISSION OF SOIL REGENERATION UNLIMITED IS PROHIBITED.</small>	



DETAIL E  
SCALE 1 : 8



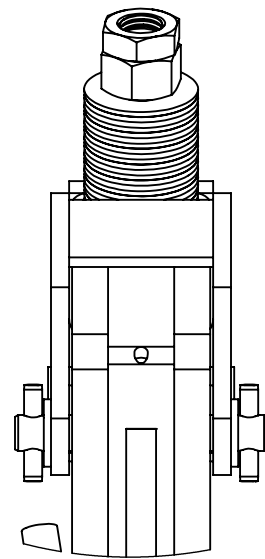
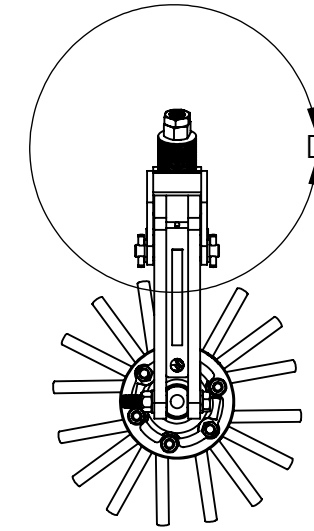
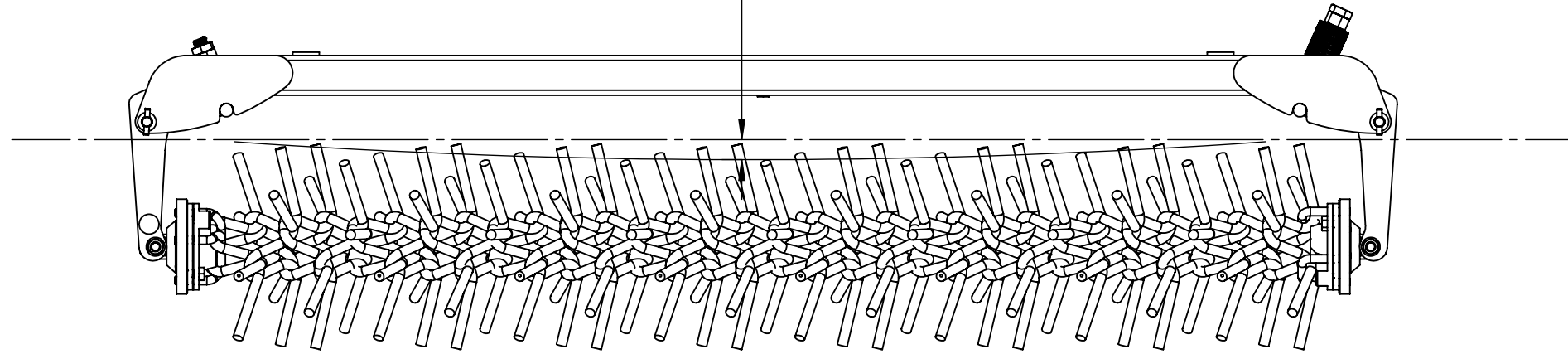
DETAIL G  
SCALE 1 : 6

Assembly BOM Link: ( contains prints to constituent part prints ) <b>ASM978A11.xls</b>	
Drawing Name: <b>ASM978A11</b>	REVISION <b>0</b> DATE 5/10/2016
A:	
B:	DEBUR AND BREAK SHARP EDGES
C:	UNLESS OTHERWISE SPECIFIED: DIMENSIONS ARE IN INCHES SURFACE FINISH: TOLERANCES: LINEAR: 1/32" ANGULAR: .1°
D:	DO NOT SCALE DRAWING
E:	<b>B</b> SCALE:1:12
NAME Daniel R. M.	SIGNATURE
SHEET 2 OF 3	

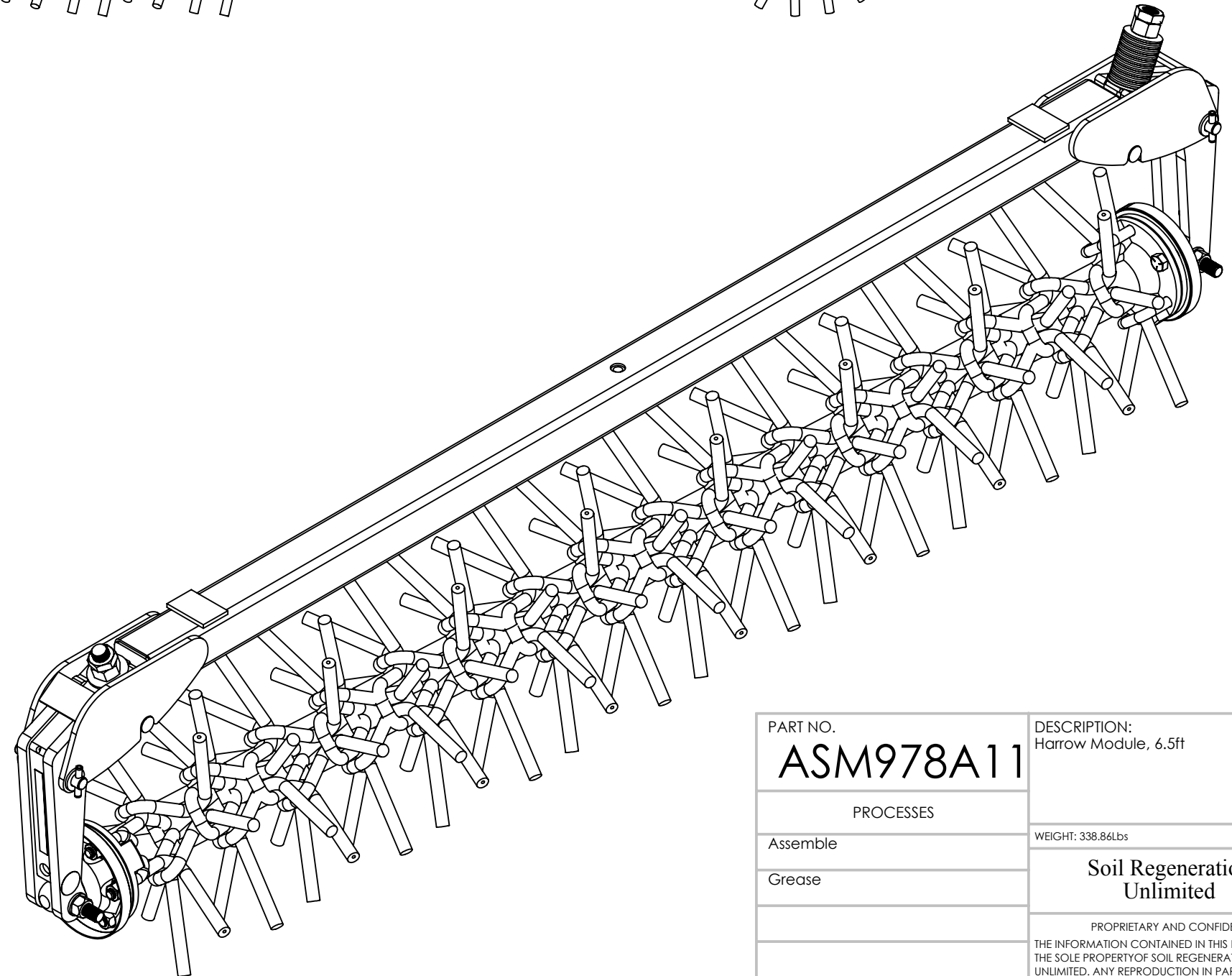
PART NO. <b>ASM978A11</b>	DESCRIPTION: Harrow Module, 6.5ft
PROCESSES	
Assemble	WEIGHT: 338.86Lbs
Grease	<b>Soil Regeneration Unlimited</b>
<small>PROPRIETARY AND CONFIDENTIAL THE INFORMATION CONTAINED IN THIS DRAWING IS THE SOLE PROPERTY OF SOIL REGENERATION UNLIMITED. ANY REPRODUCTION IN PART OR AS A WHOLE WITHOUT THE WRITTEN PERMISSION OF SOIL REGENERATION UNLIMITED IS PROHIBITED.</small>	

To have no more than  
total sag after final tightening 1 1/2"

IF SAG IS TOO GREAT AFTER TIGHTENING, TOOLING  
MUST BE REMOVED FROM CHAIN TO ACHIEVE  
PROPER TENSION



DETAIL D  
SCALE 1 : 4



Drawing Name: ASM978A11		REVISION 0	Assembly BOM Link: ( contains prints to constituent part prints ) ASM978A11.xls
A:		DATE 5/10/2016	
B:		DEBUR AND BREAK SHARP EDGES	
C:		UNLESS OTHERWISE SPECIFIED: DIMENSIONS ARE IN INCHES SURFACE FINISH: TOLERANCES: LINEAR: 1/32" ANGULAR: .1°	
D:		DO NOT SCALE DRAWING	
E:		B SCALE:1:12	
NAME Daniel R. M.	SIGNATURE	SHEET 3 OF 3	

PART NO. <b>ASM978A11</b>	DESCRIPTION: Harrow Module, 6.5ft
PROCESSES	WEIGHT: 338.86lbs
Assemble	<b>Soil Regeneration Unlimited</b>
Grease	
<small>PROPRIETARY AND CONFIDENTIAL THE INFORMATION CONTAINED IN THIS DRAWING IS THE SOLE PROPERTY OF SOIL REGENERATION UNLIMITED. ANY REPRODUCTION IN PART OR AS A WHOLE WITHOUT THE WRITTEN PERMISSION OF SOIL REGENERATION UNLIMITED IS PROHIBITED.</small>	