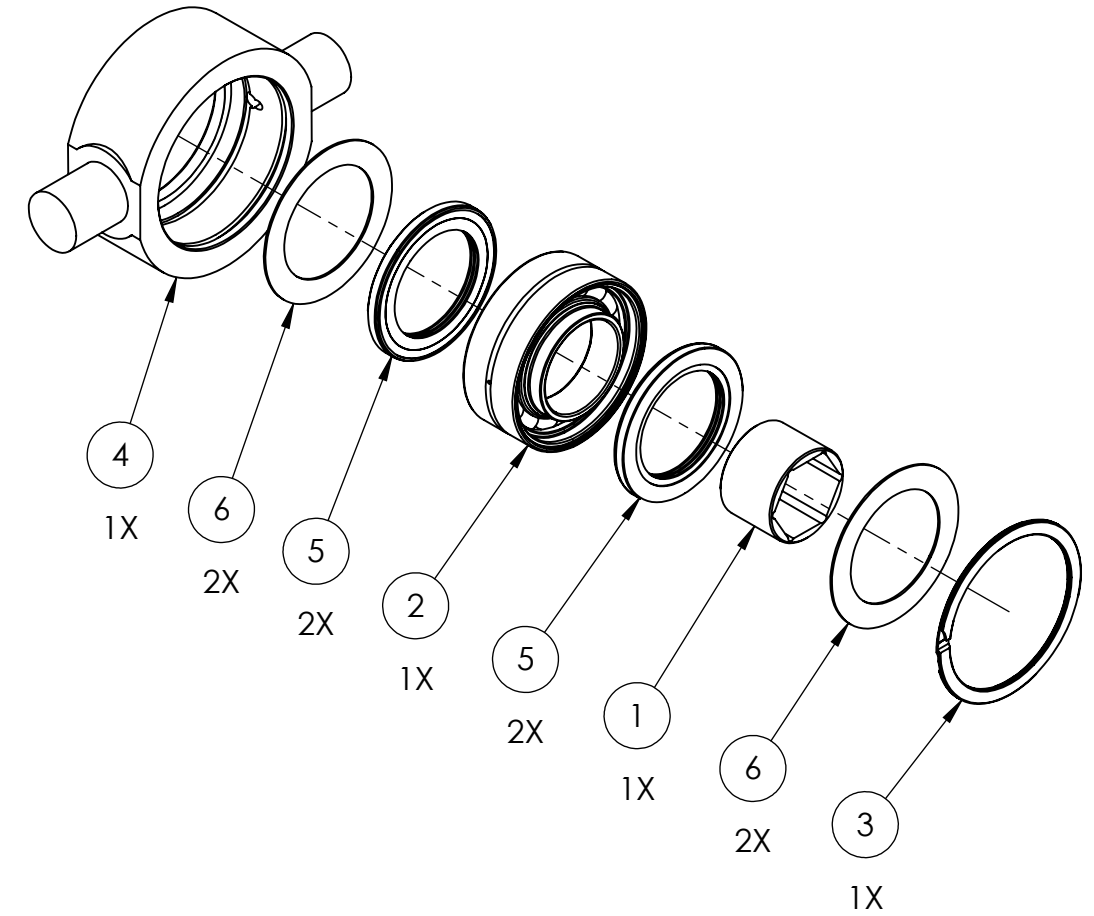
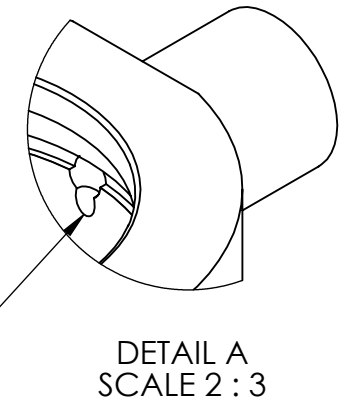


Check to confirm groove grinding on inlet hole has not been missed



Assembly BOM Link:
(contains prints to constituent part prints) [ASM986A04-B.xls](#)

Drawing Name: ASM986A04-B	REVISION 0	DATE 10/5/2016
A:	DEBUR AND BREAK SHARP EDGES	
B:	UNLESS OTHERWISE SPECIFIED: DIMENSIONS ARE IN INCHES SURFACE FINISH: TOLERANCES: LINEAR: 1/16" ANGULAR: 2°	
C:	DO NOT SCALE DRAWING	
D:	B	SCALE:1:4
E:	SHEET 1 OF 1	
NAME Daniel R. M.	SIGNATURE	

ITEM NO.	PartNo	QTY.	Weight	Description	Material	Length
1	2011267C2	1	0.42	Hex adapter, 1-1/2" thk	BAR-2.25 DIA C1018	1.5
2	2011289P2	1	2.104	100x55x41.3 Four-point contact ball BRNG w/extended races, WQK# QJ-211-TL	WQK# QJ-211-TL	50.8
3	2012093P0	1	0.10	100mm HD double turn snap ring, SMLY# WHM-393	SMLY# WHM-393	2
4	2012259C0	1	6.890	AGCO S3090H Bearing housing	AGCO# S3090H	2.16535
5	2012313P0	2	0.120	3.543 x 2.747 x .285 Triple lip seal, SKF# 24670	SKF# 24670	2
6	2012314C0	2	0.074	24670 TL seal shield washer	SH-18GA	2

PART NO. ASM986A04	DESCRIPTION: ADD DESC
PROCESSES	WEIGHT: 9.910Lbs
Assemble	Soil Regeneration Unlimited
Grease	
<small>PROPRIETARY AND CONFIDENTIAL THE INFORMATION CONTAINED IN THIS DRAWING IS THE SOLE PROPERTY OF SOIL REGENERATION UNLIMITED. ANY REPRODUCTION IN PART OR AS A WHOLE WITHOUT THE WRITTEN PERMISSION OF SOIL REGENERATION UNLIMITED IS PROHIBITED.</small>	